

# HOW TO DOWNLOAD A TREE: ROOTSMAGIC 8

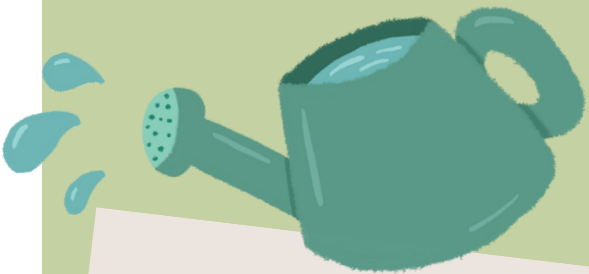
### 1. Under the file tab, choose the option "Create a New RootsMagic" file

Once you have opened RootsMagic8, select the "download from an online tree" option under the RootsMagic Files tab.



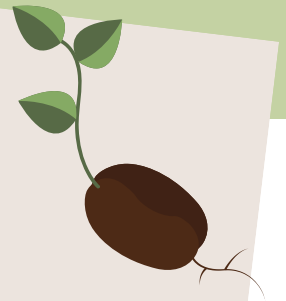
### 2. Select which website you would like to download a tree from.

You can only download a tree if it comes from Ancestry or FamilySearch. If the file comes from a different website, you will need to use the "import a file" option.



### 3. Select the location where you would like the file to be saved

The file you are downloading will need to be saved on the computer or on an exterior drive. Select the location on your computer where you would like to save the file, give it a name, and click save.

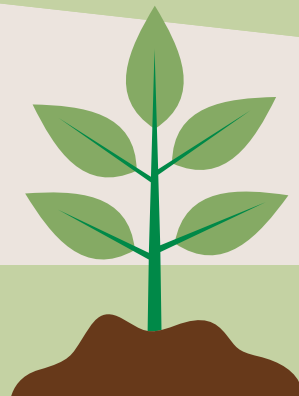


### 4. New File Options

A window will open asking you about your preferences concerning your family tree. Select how you would like the date, name, and personal information to be formatted.

### 5. Log Into Your Account

Log into your FamilySearch or Ancestry Account. Make sure to specify how many generations you would like to import.



### 6. Click Import to Finish the Process!

# HOW TO IMPORT A TREE: ROOTSMAGIC 8

## 1. Under the file tab, choose the option "Create a New RootsMagic" file

Once you have opened RootsMagic8, select the "Import from ...." option under create a New RootsMagic file.

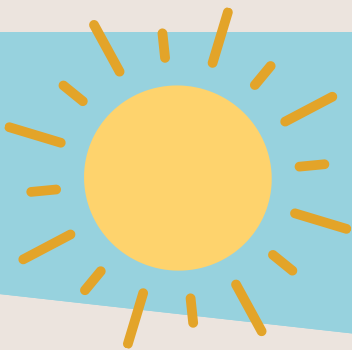


## 2. Select which type of file you would like to import

There are many different types of genealogical files. These files can be downloaded from other websites or software programs. The most common types of files are GEDCOM files and PAF files.

## 3. Select the file you would like to import from the computer.

Click the "Browse for File" option in the bottom left of your screen. Click on the file you would like to import and select the button labeled "open".

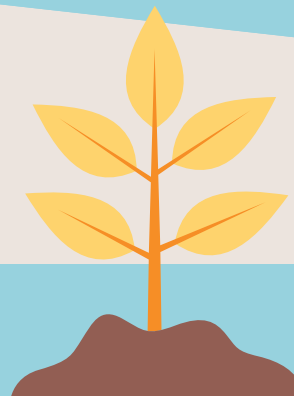


## 4. Select the Destination Folder

As you edit the file you uploaded, RootsMagic will need to save the changes you made to the computer. Click the "Browse for Destination" option in the bottom left corner of the screen and select the folder you would like those changes to be saved to.

## 5. New File Options

RootsMagic will give you the option to customize the format of the dates, names, and personal details in your tree. After you have selected your preferred options, click "OK".



## 6. Import the File and the process will be complete!